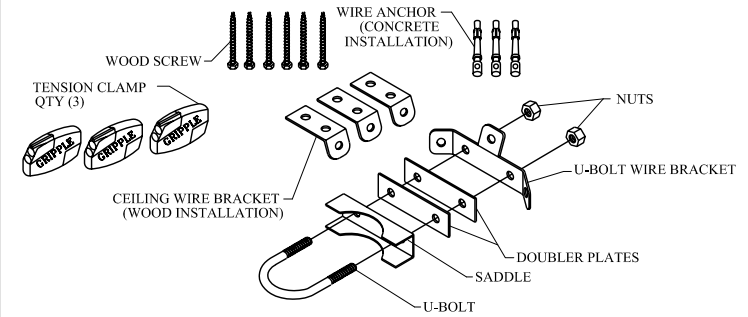
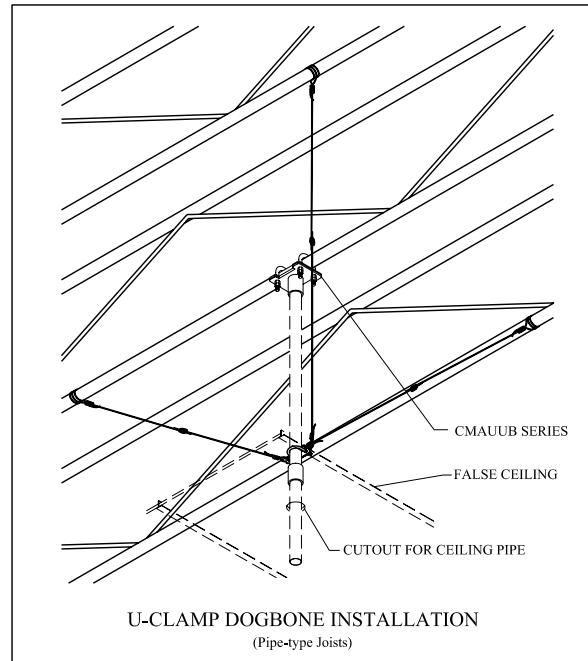
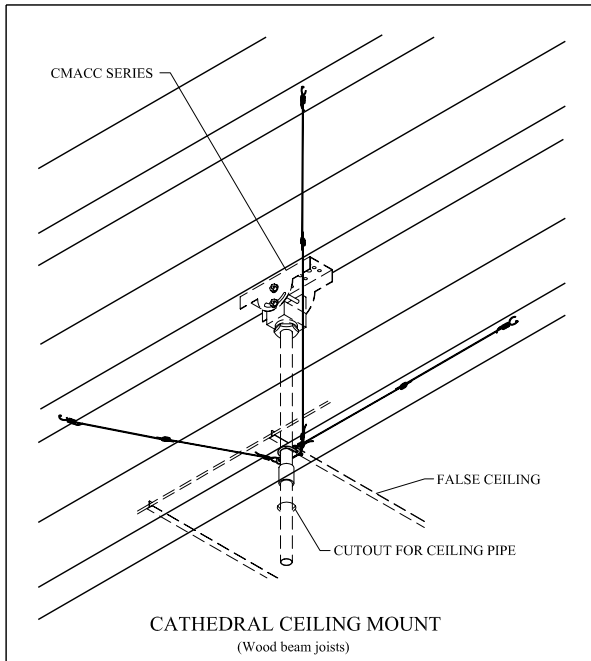
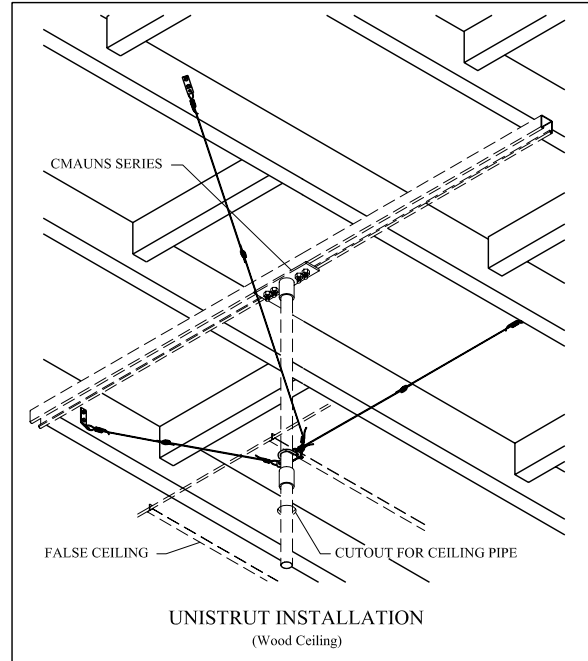
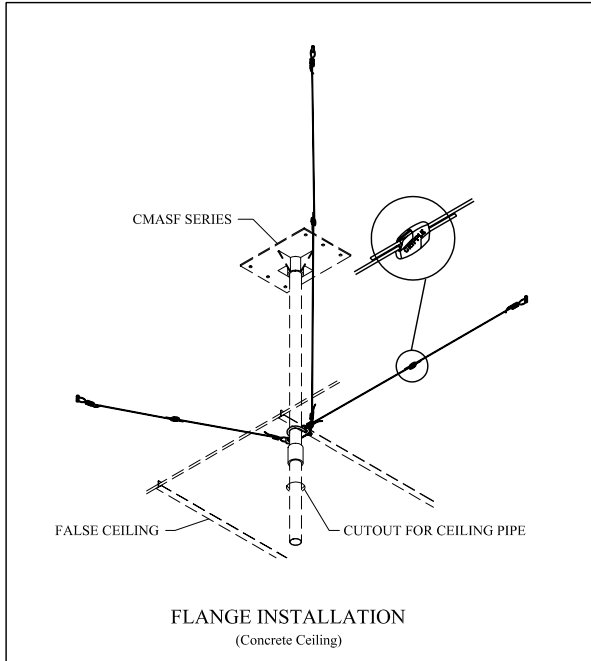


**INSTALLATION INSTRUCTIONS**

# CMASTA12 & CMASTA15 Stabilizer Kit


**ATTACHMENT TO OVERHEAD STRUCTURE**

The U-bolt bracket should be installed at least 2/3 down the pipe length.

**WOOD CEILING:** Locate ceiling wire brackets at equal distances from each other around extension pipe. Attach each bracket to ceiling with two wood screws. String tie wires through holes in brackets and wrap each wire four times to secure wires in place.

**CONCRETE CEILING:** Drill 1/4" diameter holes 1-1/2" deep in ceiling at equal distances from each other around extension pipe. Pound wire anchors into holes with claw hammer and use claw end of hammer to pull downward on anchors, securing them in place. String tie wires through holes in anchors and wrap each wire four times to secure wires in place.

**T-BAR JOISTS:** Drill 1/4" diameter holes in joists at approximately equal distances from each other around extension pipe. String tie wires through the drilled holes and wrap each wire four times to secure the wires in place.

**PIPE-TYPE JOISTS:** Wrap one each of each wire around joists at least three times and wrap each wire four times around the wire to secure the wire in place. Position wires at approximately equal distances from each other around the extension pipe.

1. String wire through holes in U-bolt wire bracket and ceiling wire brackets or wire anchors. Leave about 3 to 4 inches of slack in wires. Wrap each wire four times to secure. Cut wire in middle and slip each end into opposite sides of Gripple tensioner.
2. Pull each end of wire through tensioner until wire is tight.