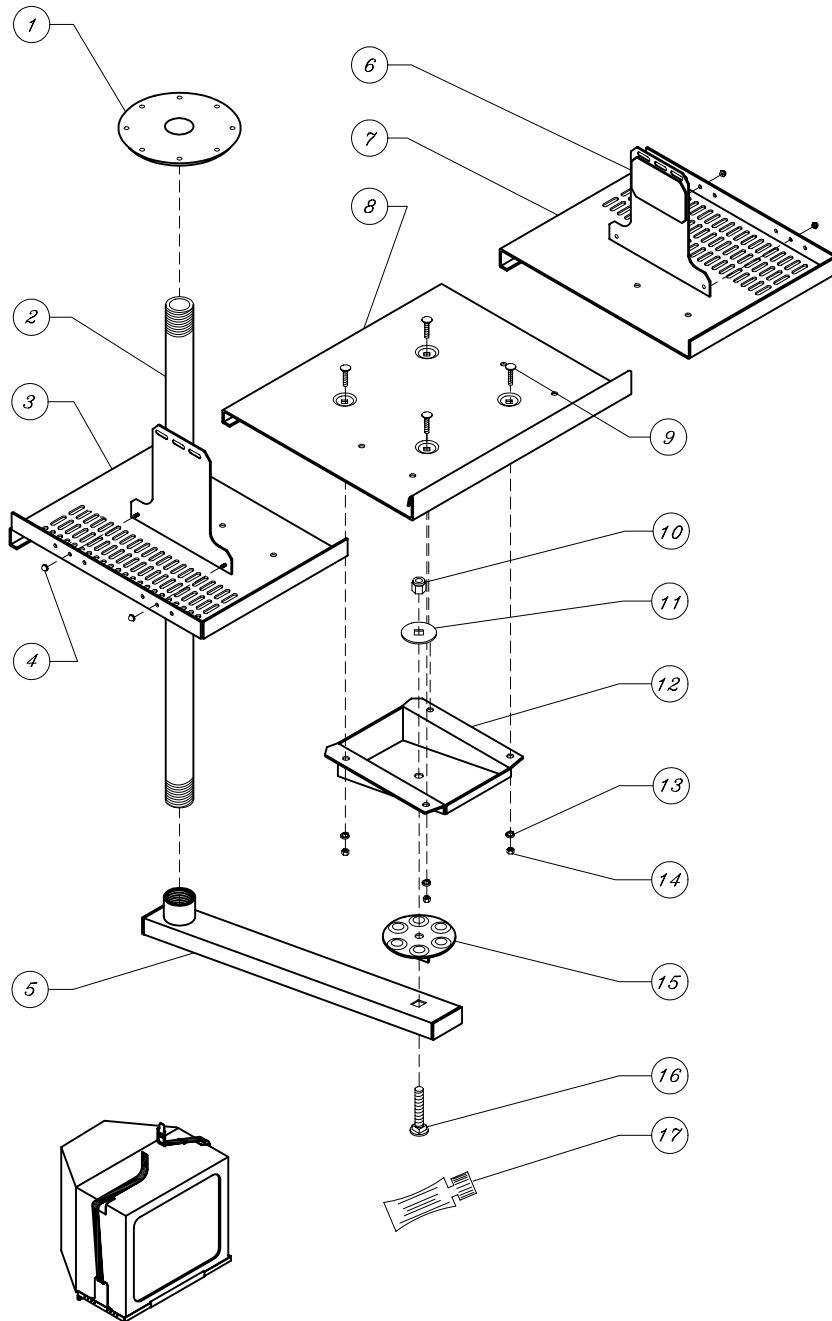


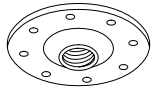
# CTL Series Adjustable Non-locking Ceiling Mounts

## CTL1014 CTL1420 CTL2030



1. Attach swivel plate (#15) and tilt plate (#12) to mounting arm (#5) with 1/2-13 x 2-1/2" carriage bolt (#16), 2-1/8" washer (#11), and 1/2-13 nylon lock nut (#10). Insert carriage bolt through bottom of arm.
2. Place center plate (#8) on tilt plate, aligning holes in center plate with holes in tilt plate.
3. Secure center plate to tilt plate with four 1/4-20 x 1/2" carriage bolt (#9), lock washers (#13), and 1/4-20 nuts (#14). Insert carriage bolts through top of center plate.
4. **CTL1014 and CTL1420:** Insert bolts on adhesive plate assemblies (#6) into holes on side of side plates (#3 and #7)
5. **CTL2030:** Insert bolts on adhesive plate assemblies (#6) into holes in side plates (#3 and #7) use holes which provide best alignment between adhesive pads and sides of monitor.
6. Attach adhesive plate assemblies to side plates with #10-24 acorn nuts (#4).
7. Slide side plates (#3 and #7) onto center plate (#8), slipping rear lip of side plates over rear lip of center plate and front lip of side plates under front of center plate.
8. Apply thread-locking fluid (#17) to threads at pipe and flange juncture. Also apply fluid at pipe and mounting arm joint to eliminate *swing arm* action if desired. Assemble parts now. Screw ceiling pipe (#2) into flange (#1) and mounting arm (#5) onto ceiling pipe.
9. Attach flange to ceiling using appropriate fasteners.
10. Place monitor on plate assembly. Remove plastic covering from adhesive plate assemblies and press side plates inward to affix adhesive plates to sides of monitor.
11. Center the center plate beneath monitor. Secure side plates to center plate with two small carriage bolts and nuts through slots and holes in the lower lip at the back of plates.
12. Attach monitor to side plates with fasteners appropriate to the underside of the monitor.
13. For additional security, attach security strap as shown in ST20 instructions.

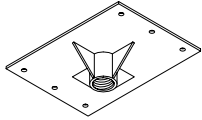
# Ceiling Mount Accessories



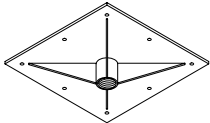
**Round Ceiling Flange**  
**Part No. CMARF100** ( for 1" I.D. pipe )  
**Part No. CMARF125** ( for 1-1/4" I.D. pipe )  
*Aluminum alloy casting 7.41" diameter*  
*(8) 5/16" diameter Countersunk bolt holes*



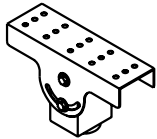
**Reducer Couplings**  
**Part No. CMARED12** ( for 1-1/4" - 1" I.D. pipe )  
**Part No. CMARED15** ( for 1-1/2" - 1-1/4" I.D. pipe )



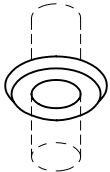
**Ribbed Ceiling Flange**  
**Part No. CMASF100** ( for 1" I.D. pipe )  
**Part No. CMASF125** ( for 1-1/4" I.D. pipe )  
*Recommended with stabilizer kit when adding*  
*3' or more additional pipe. 7 gauge, (6) 7/16*  
*diameter bolt holes*



**ATLAS Ceiling Flange Part No. ACM3045F**  
*Accepts 1-1/2" I.D. standard threaded schedule*  
*40 pipe. (8) 7/16" diameter holes. Hardware not*  
*included.*



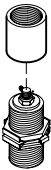
**Cathedral Ceiling Mount**  
**Part No. CMACC100** ( for 1" I.D. pipe )  
**Part No. CMACC125** ( for 1-1/4" I.D. pipe )  
**Part No. CMACC150** ( for 1-1/2" I.D. pipe )  
*Adjustable for ceilings up to 45°.*



**Chrome Escutcheon Flange**  
**Part No. CMAEF100** ( for 1" I.D. pipe )  
**Part No. CMAEF125** ( for 1-1/4" I.D. pipe )  
**Part No. CMAEF150** ( for 1-1/2" I.D. pipe )  
*Provides neat, finished appearance for ceiling*  
*mounts extending through false ceilings.*



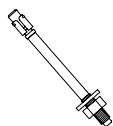
**Cut - to - Size Pipe**  
**Part No. CMAP100** ( for 1" I.D. pipe )  
**Part No. CMAP125** ( for 1-1/4" I.D. pipe )  
**Part No. CMAP150** ( for 1-1/2" I.D. pipe )  
*Cut - to - size up to 60". Threaded on both ends.*  
*Black wrinkle finish. (Lengths are within 1")*



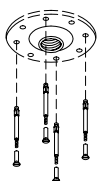
**Swivel Restrictor**  
**Part No. CMASR100** ( for 1" I.D. pipe )  
**Part No. CMASR125** ( for 1-1/4" I.D. pipe )  
 For ACM Ceiling Mounts. Limits rotation to 270°



**Pipe Couplings**  
**Part No. CMACP100** ( for 1" I.D. pipe )  
**Part No. CMACP125** ( for 1-1/4" I.D. pipe )  
**Part No. CMACP150** ( for 1-1/2" I.D. pipe )  
*Black wrinkle finish.*

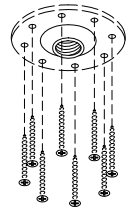


**Concrete Anchor Bolt Kit for flat surfaces**  
**Part No. CMAABFH6** 6 pc. kit  
**Part No. CMAABFH** 100 pc. kit

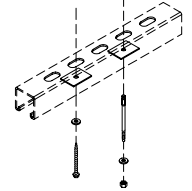


**Concrete Anchor Bolt Kit for countersunk holes.**  
**Part No. CMAABCS4** 4 pc. CS Anchor Bolts  
**Part No. CMAABCS** 100 pc. CS Anchor bolts  
*Countersunk heads for attachment of ROUND*  
*FLANGES ONLY to concrete structures.*

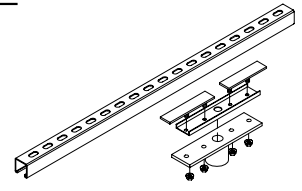
**Round Flange**  
**Wood Installation Hardware Kit**  
**Part No. CMAWSCS8** 8 pc. #14 x 2" CS Screws  
**Part No. CMAWSCS** 100 pc. #14 x 2" CS Screws  
 Countersunk heads for attachment of ROUND  
 FLANGES ONLY to wood block structures.



**Unistrut Hardware Kit Part No. CMAUKIT**  
*Contains 4 each of all necessary hardware for*  
*attaching Unistrut to wood and concrete ceilings.*

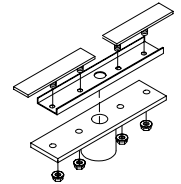


LENGTH	CHANNEL ONLY	CHANNEL & FLANGE
	Part No.	Part No.
24"	<b>CMAUN024</b>	<b>CMAUNS24</b>
36"	<b>CMAUN036</b>	<b>CMAUNS36</b>
48"	<b>CMAUN048</b>	<b>CMAUNS48</b>
60"	<b>CMAUN060</b>	<b>CMAUNS60</b>
72"	<b>CMAUN072</b>	<b>CMAUNS72</b>
84"	<b>CMAUN084</b>	<b>CMAUNS84</b>
96"	<b>CMAUN096</b>	<b>CMAUNS96</b>

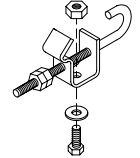


*Permits ceiling mounts between struts*

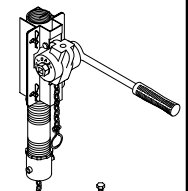
**Unistrut Sliding Flange**  
**Part No. CMAUSF10** ( for 1" I.D. pipe )  
**Part No. CMAUSF12** ( for 1-1/4" I.D. pipe )  
**Part No. CMAUSF15** ( for 1-1/2" I.D. pipe )  
*Order Unistrut Separately Order Hardware Kit*  
*CMAUKIT separately.*



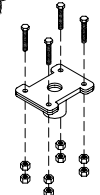
**Beam Clamp Kit Part No. MRABC**  
*Permits attachment of Unistrut or threaded*  
*rod to I-beams 4" - 8" wide.*  
*2 required per installation.*



**Hoist Lift**  
**Part No. CMAH** - Hoist only  
**Part No. CMAH125** Housing ( for 1-1/4" I.D. pipe )  
**Part No. CMAH150** Housing ( for 1-1/2" I.D. pipe )  
*500 lb. lift capacity for One man installation.*

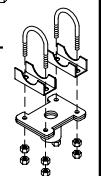


**Dogbone Flange**  
**Part No. CMADB100** ( for 1" I.D. pipe )  
**Part No. CMADB125** ( for 1-1/4" I.D. pipe )  
**Part No. CMADB150** ( for 1-1/2" I.D. pipe )  
*Permits attachment of ceiling mounts to bar joists.*



**U-bolt Dogbone Flange**

COUPLING SIZE	1-5/8" I.D. U-BOLT	2-1/8" I.D. U-BOLT	3" I.D. U-BOLT
	Part No.	Part No.	Part No.
1.00" I.D. ACMs	<b>CMAUDB10</b>	<b>CMAU2DB1</b>	<b>CMAUD310</b>
1.25" I.D. ACMs	<b>CMAUDB12</b>	<b>CMAU2DB</b>	<b>CMAUD312</b>
1.50" I.D. ATLAS	<b>CMAUDB15</b>	Not available	<b>CMAUD315</b>



**Stabilizer Kit**  
**Part No. CMASTA12** ( 1" and 1-1/4" pipe )  
**Part No. CMAST15** ( for 1-1/2" pipe )  
*Recommended when adding 3' or more additional pipe.*  
*Provides additional stability for ceiling mounts*  
*Includes twenty feet of tie wire and anchorage*  
*hardware for wood and concrete ceilings.*

